

LA County Department of Public Health

Nursing Student Orientation



Material Review

Purpose & Agenda



Dress Code



Badges



HIPAA Tests



Public Health Nursing Student Orientation
Agenda
Wednesday, September 30, 2015
CMS Telstar Room 201

8:00–8:10 a.m.	Welcome & <i>Housekeeping</i> - <i>Rosarina Albert</i>
8:10 – 8:20 a.m.	Pre-test - <i>Rosarina Albert</i>
8:20 -8:40 a.m.	PH & PHN Overview - <i>Rosarina Albert</i>
8:40–9:00 a.m.	Tuberculosis Control Program - <i>Sandra Bible</i>
9:05 –9:25 a.m.	Nurse Family Partnership - <i>Maricela Vasquez</i>
9:25 - 9:35 am	<u><i>BREAK</i></u>
9:35- 9:55 a.m.	Acute Communicable Disease Control - <i>Juliet Bugante</i>
10:00 - 10:20 a.m.	DHSP (HIV) - <i>Anissa Brown</i>
10:25 - 10:45 a.m.	Environmental Health - <i>Agustin Hueso</i>
10:50 - 11:10 a.m.	PHI - <i>Sebrena Williams</i>
11:15 – 11:35 a.m.	Immunization Program - <i>Andrew Pourmohsen</i>
1:35 – 12:35 m.	_____ <i>LUNCH,</i>
12:35 - 12:55 p.m.	Lead - <i>Ayda Keshishian</i>
1:00 – 1:20 p.m.	APHA Video - <i>Rosarina Albert</i>
1:25 – 1:45 p.m.	Video "SNOW" – <i>Rosarina Albert</i>
1:50–2:10 p.m.	Emergency Preparedness - <i>Sandra Gomez</i>
2: 10–2:20 p.m.	<i>BREAK</i>
2:20–2:40 p.m.	DHSP (Sexually Transmitted Diseases) - <i>Monica Munoz</i>
2:45 –3:05 p.m.	Recruitment & Retention - <i>Rosarina Albert</i>
3:10–3:30 p.m.	Q & A - <i>Rosarina Albert</i>
3:35 – 3:45 p.m.	Post-Test & Evaluation - <i>Rosarina Albert</i>

Objectives

The participant will have:

1. An increased awareness of Public Health.
2. Be able to conduct a community assessment.
3. Increased knowledge/skills when working with community groups.
4. Increase in skills and knowledge to advocate the community's needs.



Objectives Continued

The participant will have:

5. Increased awareness of the role and responsibility of Public Health.
6. Increased awareness of the differences between Public Health and Personal health.
7. The participant will be able to demonstrate the use of one communication technique when interacting with vulnerable populations.



PRETEST



Nursing Administration proudly presents

Public Health 101 Game

*Let's find out
how much you already know about
Public Health!*

Adapted with permission from Kaiser Permanente

To play click
here

Basic Public Health	LAC Dept of Public Health	Public Health Nursing	Public Health Advanced	
<u>10</u>	<u>10</u>	<u>10</u>	<u>10</u>	
<u>20</u>	<u>20</u>	<u>20</u>	<u>20</u>	
<u>30</u>	<u>30</u>	<u>30</u>	<u>30</u>	
			<u>40</u>	

Final Question



What is Public Health?



Art and science of preventing disease and injury and promoting the health of populations through organized community effort.



Who can access Public Health services?

EVERYONE,
not just the poor

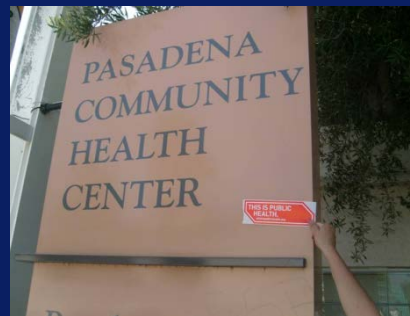
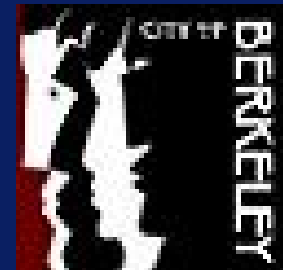
http://www.hungeractionla.org/peoples_guide.htm

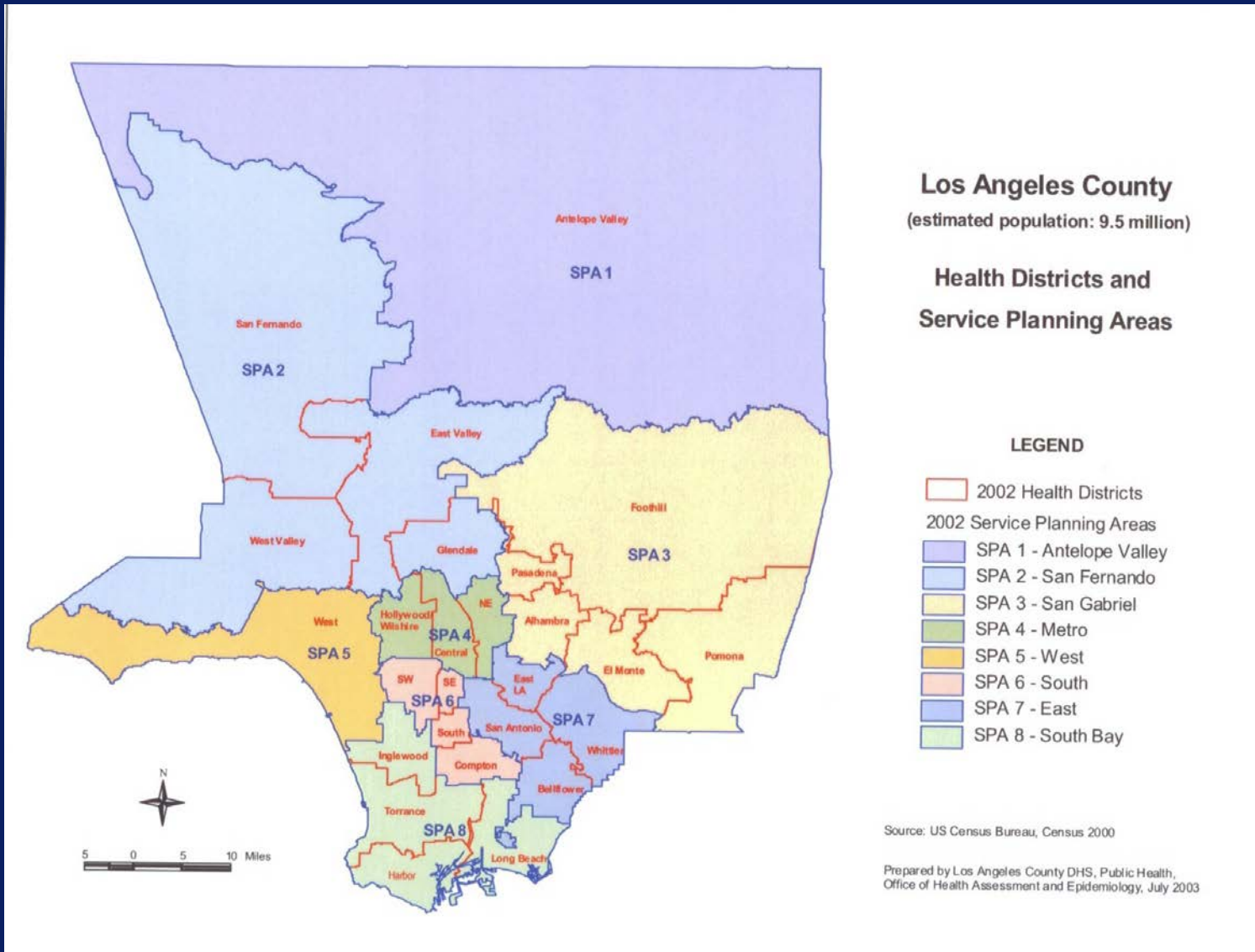


Organization of Public Health

City health departments

- Long Beach
- Pasadena
- Berkeley
- Vernon





20 What Type of PHN?

Community Health Services

- Housed at various health centers
- Conduct home visits
- “Clients” include those at risk, as well as providers, cases and their families
- Assist with flu clinics, health fairs, and classes in the community

Program

- Services are focused on a population of interest (specific target population)
- “Clients” include those at risk, as well as providers, cases and their families
- Case management, surveillance of diseases, policy development, consultation

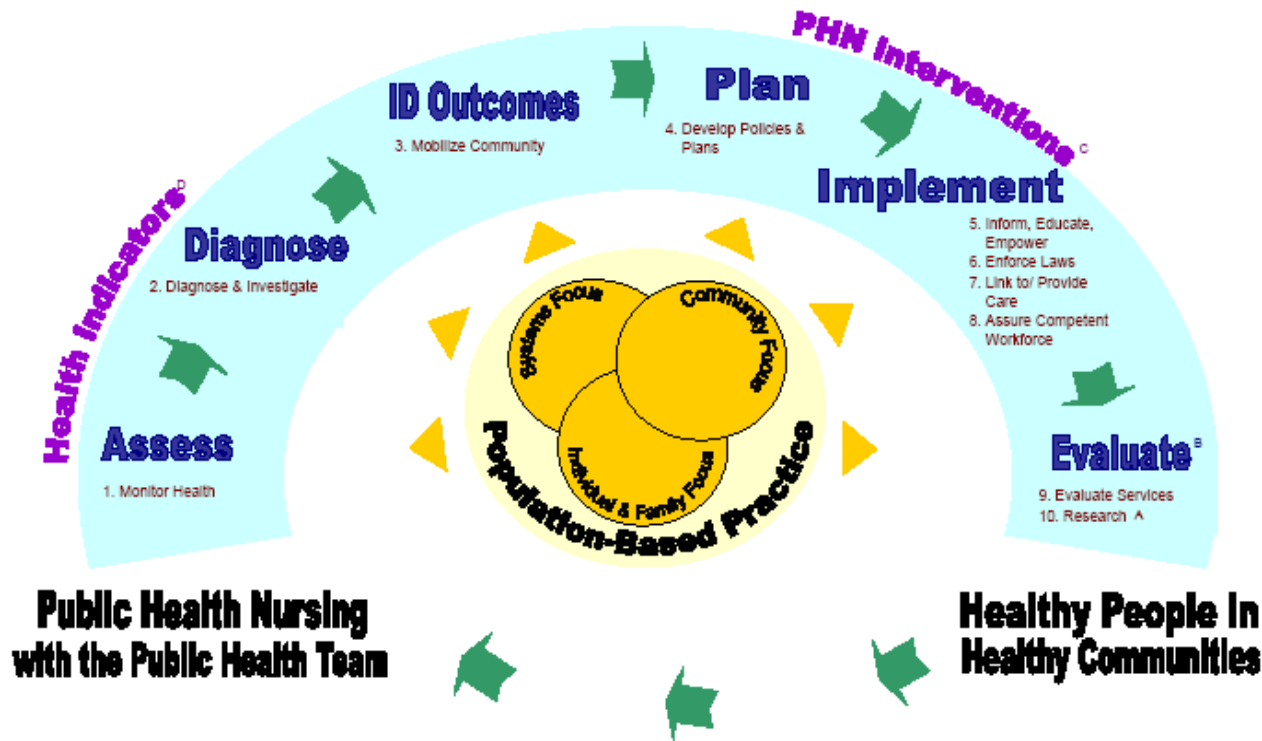


30 Public Health Nursing Administration

- Education & Professional Development Unit
- Nursing Informatics
- Recruitment & Retention
- Quality Improvement



Public Health Nursing Practice Model*



References:

- (A) Public Health Functions Steering Committee. (1994, Fall). *Public Health in America*. Retrieved May 7, 2001, from the World Wide Web: <http://health.gov/phtfunctions/public.htm>
- (B) Quad Council of Public Health Nursing Organizations. (2007). *Scope and Standards of Public Health Nursing Practice*. Silver Spring, M.D.: American Nurses Association.
- (C) Minnesota Department of Health, Public Health Nursing Section. (2000). *Public Health Nursing Practice for the 21st Century: National Satellite Learning Conference; Competency Development in Population-based Practice* October 5, November 2, December 7, 2000. St. Paul, MN: Minnesota Department of Health, Public Health Nursing Section. Retrieved May 7, 2001, from the World Wide Web: <http://www.health.state.mn.us/divs/ichs/phtn/material.htm>
- (D) U.S. Department of Health and Human Services. (2000). *Healthy People 2010*. (Vol. 1). McLean, VA: International Medical Publishing, Inc.

www.publichealth.lacounty.gov

*Created by Los Angeles County DHS, Public Health Nursing with input from CCLHDND-Southern Region. This model serves as the basis for the CCLHDND California PHN Practice Model (04-2007).
© 2007 Los Angeles County DHS Public Health Nursing



Day to Day Work of PHNs

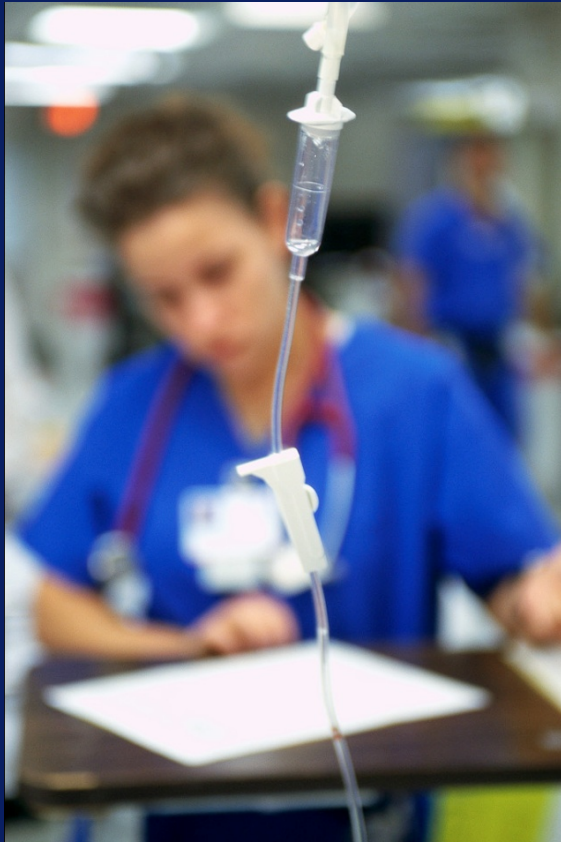


- Primary prevention
- 3 levels of practice
 1. Individual and family
 2. Community
 3. Systems

“Population-based Nursing”



Public Health needs....



all
nurses on the
Public Health
Team



Public Health Contributions

1900-1999

1. Vaccination
2. Motor vehicle safety
3. Safer workplaces
4. Control of infectious diseases
5. Decline in coronary heart disease & stroke deaths
6. Safer & healthier foods
7. Healthier mothers & babies
8. Family planning
9. Fluoridation of drinking water
10. Tobacco as health hazard



Public Health vs. Personal Health



Personal Health/Primary Care:

- Improvement in the health of an *individual*.



Public Health:

- The goal is the Improvement in the health of the *whole population*.

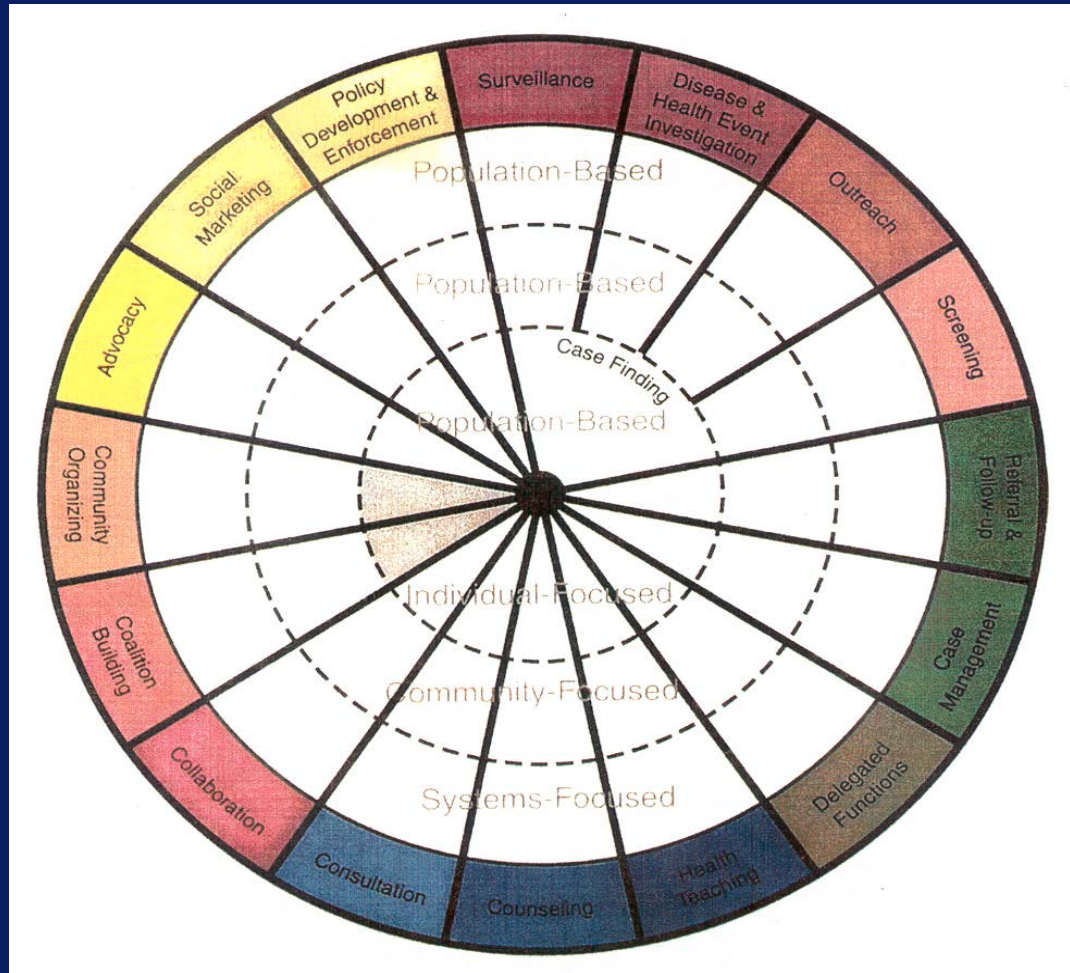




- Adolescent Health
- Blood Disorders & Blood Safety
- Dementias, incl. Alzheimer's
- Early and Middle Childhood
- Genomics
- Global Health
- Healthcare-Associated Infections
- Health-Related Quality of Life and Well-Being
- Lesbian, Gay, Bisexual, and Transgender Health
- Older Adults
- Preparedness
- Sleep Health
- Social Determinants of Health



Minnesota DHS PHN Interventions



Final Question

- Teaching families about potential sources of lead
- Treats patients for food poisoning
- Works on policies to promote smoking cessation Countywide
- Treats children who have been exposed to lead
- Inspects retail food establishments and maintains Food Facility Rating System
- Administering medicines to patients with tobacco-related health problems

